

Notice to Mariners

Gunfleet Sands Offshore Wind Farm – Export Cable

13th MAY 2016

Further to previous Notice to Mariners' (NtM)¹ which notified mariners of the presence of discrete areas of exposed High Voltage cable above the seabed, more recent bathymetric surveys of this area have been undertaken (Sep/Oct 2015) and the status of these exposures has been updated – see Table 1 and the attached figure.

Table 1 Summary of Areas 1-3 shown on attached figure (May 2016)

Area	Coordinates		Distance offshore	Status of exposure
	Easting	Northing		
1	376811.00E	57407932.20N	0.4km	Approx. 11m of cable remains exposed. However, proximity to shore means that risk to mariners is judged to be very low.
2	377498.00E	5734170.40N	7.2km	No cable exposure in this area.
3	378321.82E	5732488.01N	9.1km	No cable exposure in this area– scour (and cable exposure) at base of offshore substation foundation recently remediated via rock dump campaign.

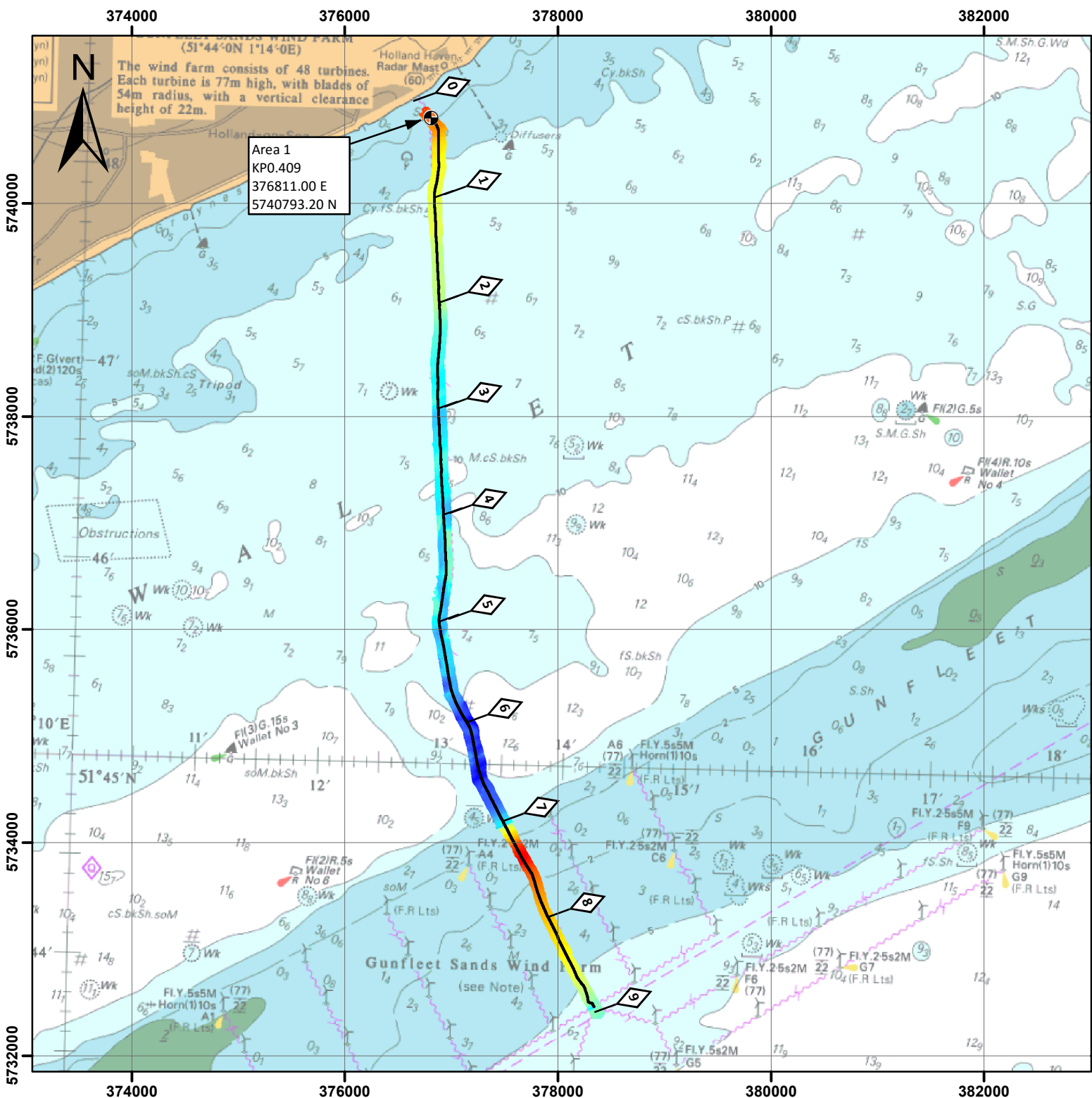
Even though no cable exposure in Area 2 has been recorded by the most recent (2015) survey, mariners are still requested to take care around this location. The dynamic nature of the seabed here may result in ongoing re-exposure of parts of the cable. Ongoing surveys will be undertaken and further NtM's issued as/when additional information emerges re: any cable exposures.

Any questions relating to the cable areas mentioned in this NtM should be directed to;

Jonny Lewis – Environmental & Consents Adviser to TC Gunfleet OFTO Ltd

MarineSpace Ltd
16, Temeraire House
Milford Marina
Milford Haven
Pembrokeshire
SA73 3BN
E: jonny.lewis@marinespace.co.uk
M: 07817 644284

¹ NTM 1: DONG Energy, November 2013
NTM 2: TCP, February 2015
NTM 3: TCP, September 2015



Gunfleet Sands (I & II) OWF Export Cable Overview

Export Cable
 KPs
 Area of Interest

2014 Bathymetry
Water Depth (m) (LAT VORF)
 0.301875
 14.7825



COORDINATE SYSTEM WGS84 UTM Zone 31N	PROJECTION Transverse Mercator	SCALE 1:50,000	PAGE SIZE A4
---	-----------------------------------	-------------------	-----------------

0 0.75 1.5 3 Kilometers
 0 0.375 0.75 1.5 Nautical Miles

Notes: Areas of Interest positions are from '113-500-94-GFS1_2_EXPORTCABLE_REPORT_R00+CHARTS&APPENDICIES_APRIL201'. Bathymetry supplied as 2m gridded data. Depths referenced to LAT (VORF)

Data: Gunfleet_Cable_As_Laid.shp
GFS_KPs.shp
P1053_GFS_2014_2m.tif

UKHO Charts 1975-0, © British Crown and SeaZone Solutions Limited. All rights reserved. Licence No. 092008.004



Date	Rev	Drawn	Checked	File	Page
11/05/2016	R0	JD	BC	P1053-DW-B28-R0	1 of 1